



# SOUTH HUNTERDON REGIONAL SCHOOL DISTRICT

County: HUNTERDON  
 Superintendent: DR. MUENKER  
 301 MT. AIRY-HARBOURTON RD  
 LAMBERTVILLE, NJ 08530-3210  
<http://shrsd.org/>  
 (609)397-1888 Ext. 1222

2017-2018

Total students: **929**

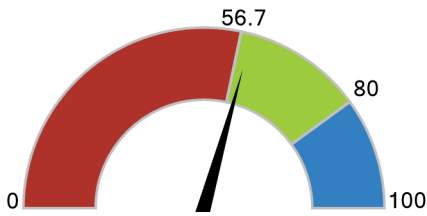
- Economically Disadvantaged: **21.5%**
- Students with Disabilities: **18.5%**
- English Learners: **5.9%**
- Grades offered: **PK-12**
- Student to Teacher Ratio: **9:1**
- Teacher Average Experience (years): **12.1**

## How did students perform on assessments?

Students that met or exceeded expectations on statewide assessments

### English Language Arts

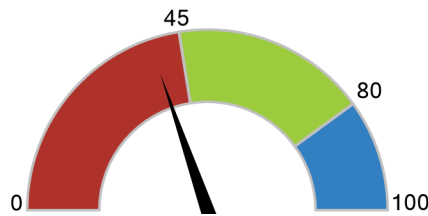
**58.7%**



Below State: 0 - 56.6%  
**Met State: 56.7 - 79.9%** ✓  
 Met Goal: 80 - 100%

### Math

**39.4%**

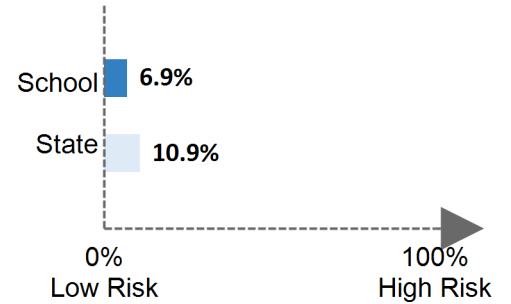


Below State: 0 - 44.9% ✓  
 Met State: 45 - 79.9%  
 Met Goal: 80 - 100%

## Are students at risk?

Students that were absent for 10% or more of days enrolled

### Chronic Absenteeism



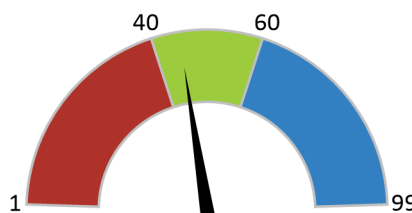
## How does student growth compare to other students?

### Median Student Growth Percentile

Each student gets a **student growth percentile** from 1 to 99 for English (4th to 8th grade) and Math (4th to 7th grade) that explains their progress compared to students who had similar test scores in the past. If the student growth percentiles for all students in the school are ordered from smallest to largest, the **median student growth percentile** is the percentile in the middle of that list.

### English Language Arts

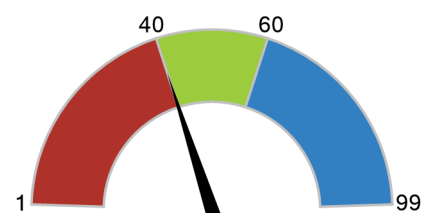
**45**



Below Standard: 1 - 39.5  
**Met Standard: 40 - 59.5** ✓  
 Exceeds Standard: 60 - 99

### Math

**40**

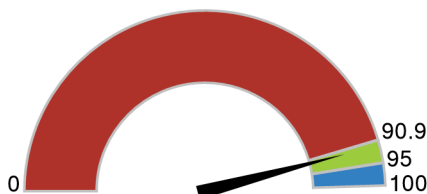


Below Standard: 1 - 39.5  
**Met Standard: 40 - 59.5** ✓  
 Exceeds Standard: 60 - 99

## Are students graduating?

4-year Graduation Rate

**91.8%**



Below State: 0 - 90.8%  
**Met State: 90.9 - 94.9%** ✓  
 Met Goal: 95 - 100%

## Are students college and career ready?

### AP/IB Courses:

**28.7%** of 11<sup>th</sup> and 12<sup>th</sup> graders enrolled (State = 34.9%)

### Dual Enrollment Courses:

**0.0%** of 11<sup>th</sup> and 12<sup>th</sup> graders enrolled (State = 13.3%)

### Industry-Valued Credentials:

**Data not shown to protect student privacy** (State = 0.9%)

### College Enrollment:

**81.5%** of graduates enrolled (State = 77.9%)

## How to use this report?

- Learn More about this district by viewing the [detailed report](#).
- Start Conversations with school community members and ask questions.
- Engage with your school communities to identify where schools are doing well and where they can improve.